



# Long Sault Logistic Village

November 10, 2021



An aerial photograph showing a road that winds through a large body of water, crossing several islands. The islands are covered in dense green trees. The water is a deep blue-grey color. The sky is light blue with some white clouds. The overall scene is a scenic view of a road project in a natural setting.

## **Agenda**

Who is Camino LVS?

Why Long Sault

Concept Plan & Vision

Project Roadmap

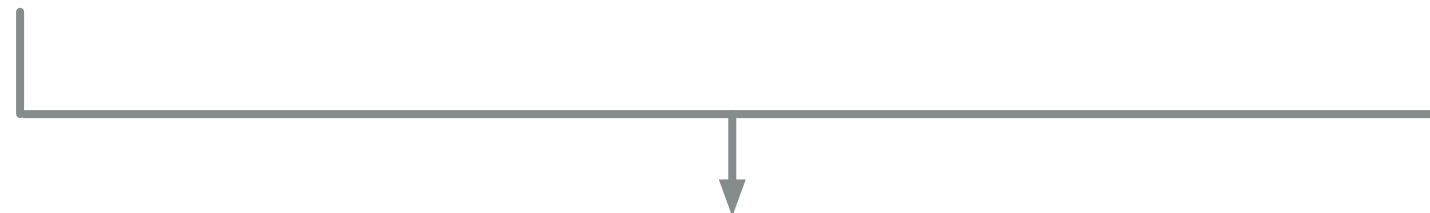
# Who is Camino LVS?



Expertise in land development and financing, project management, and property management



Expertise in rail yard management, rail support facilities, logistics, and rail servicing and maintenance



Joint venture to create transmodal logistics villages across Canada

# Who is Camino LVS?

Global News

## North American must be made 'more resilient' to supply chain issues: Champagne | Watch News Videos Online

Minister of Innovation, Science and Industry François-Philippe Champagne said during a press conference on supply chain disruptions in...



The Guardian

## World's biggest banks to play a role in limiting greenhouse gas emissions

World's biggest banks to play a role in limiting greenhouse gas emissions. Pledge by over 450 financial institutions in 45 countries billed as...



Wall Street Journal

## When Will the Supply-Chain Strains Finally Ease?

Large numbers of companies pointed to supply-chain constraints as a drag on earnings. There are growing signs that issues like port...

4 hours ago



BBC

## Climate change: Carbon emissions show rapid rebound after Covid dip

Global carbon dioxide emissions are set to rebound to near the levels they were at before Covid, in a finding that has surprised scientists.



NPR

## A supply chain bottleneck at the nation's seaports is causing

...

A gargantuan crane plucks a rust-colored container from a cargo ship nearly as long as three football fields, and drops it onto a truck with...



Reuters

## Canada's exports drop as supply chain woes drag auto sector

Imports were down 3.0%, also hit hard by the worsening supply chain issues for motor vehicle and parts. Canada's trade surplus with the...



International Railway Journal

## Making the case for rail at COP26

"Rail travel makes up 10% of global mobility but only 0.3% of greenhouse gas emissions." Lucie Anderton. Ms Lucie Anderton, head of the...

4 days ago



Global News

## Canadian homebuyers facing weeks of move-in delays tied to supply chain snags

They're not the only ones facing housing delays amid global supply chain disruptions, with homebuilding activity across the country snarled by a...



CBC.ca

## COP26 leaders warned of 'doomsday' as India vows to reduce emissions to net zero by 2070

The conference is aimed at getting agreement to curb carbon emissions fast enough to keep global warming to 1.5 C above pre-industrial...



Truck News

## Ontario to tighten emissions testing for trucks

TORONTO, Ont. – Ontario will soon announce a re-designed emissions testing program for heavy-duty diesel vehicles, a government source has...

Aug. 27, 2019



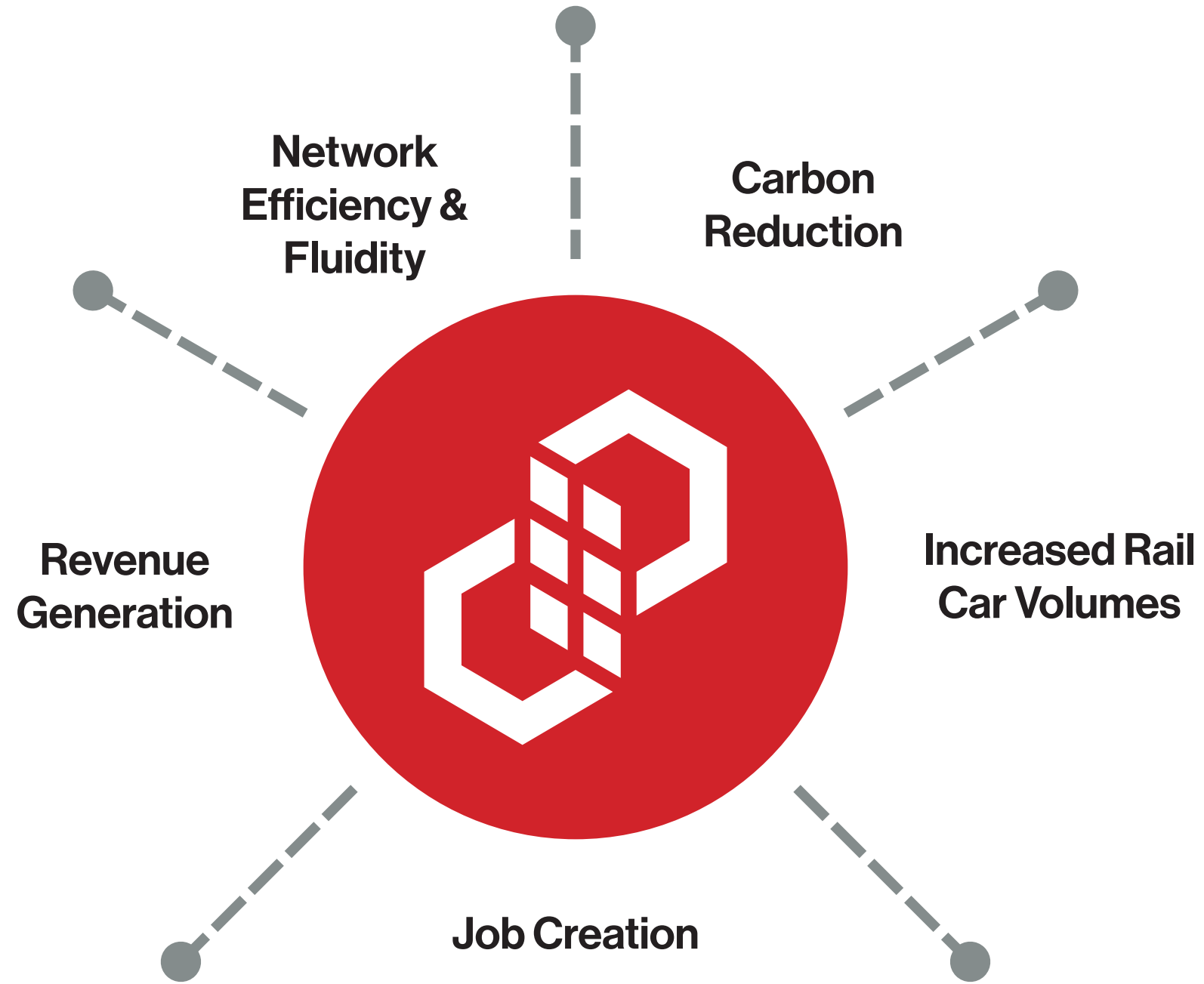
CNN

## White House to launch a dashboard tracking supply chain crisis

The dashboard comes as tangled supply chains have boosted the cost and limited the availability of everything from automobiles to clothing to...



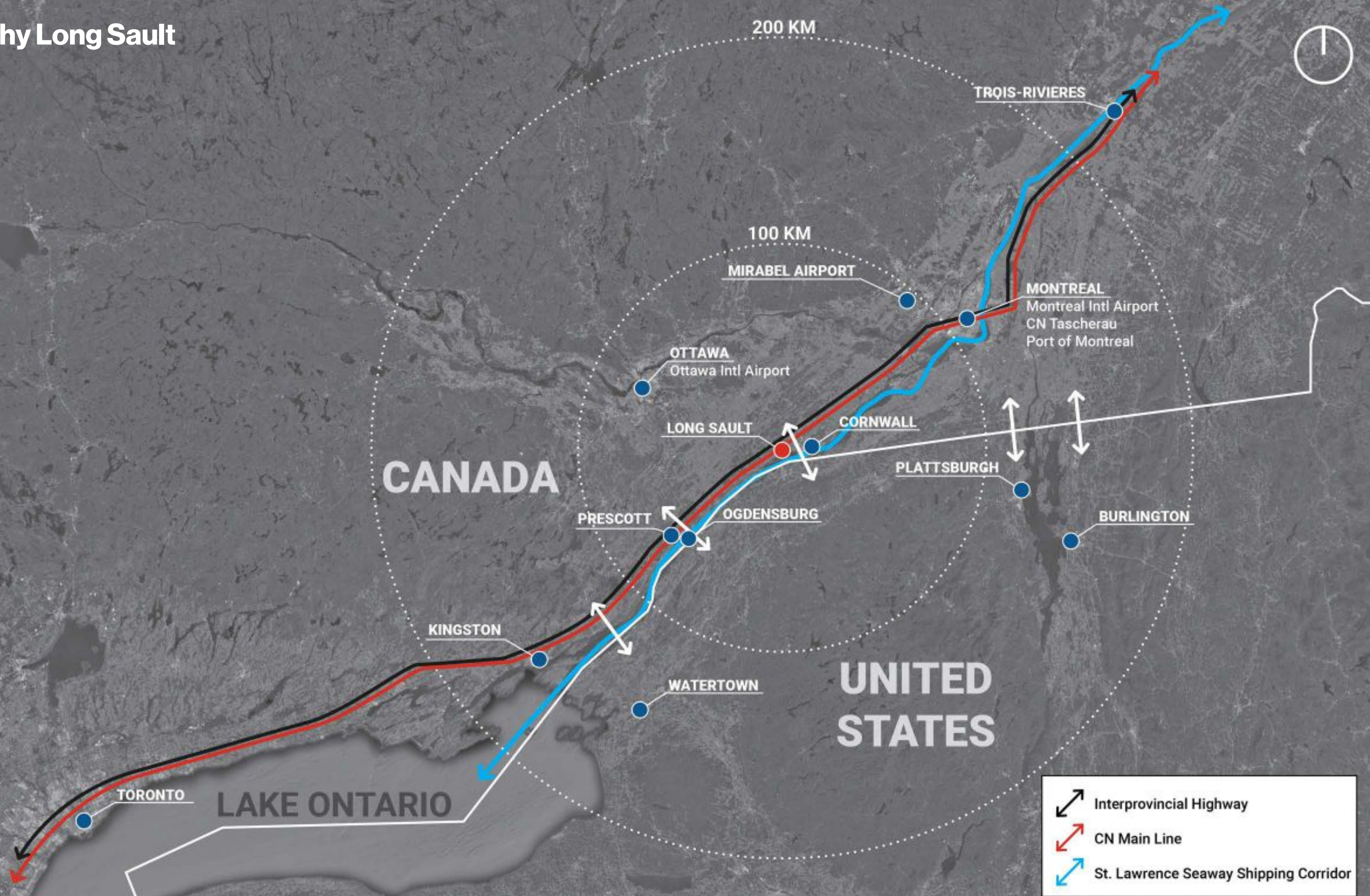
# Who is Camino LVS?



# Why Long Sault



# Why Long Sault



# Why Long Sault



COUNTY ROAD 29

401

TO CORNWALL  
& MONTREAL

COUNTY ROAD 15

TO HIGHWAY 416,  
KINGSTON, & TORONTO

COUNTY ROAD 35

CANADIAN NATIONAL RAILWAY

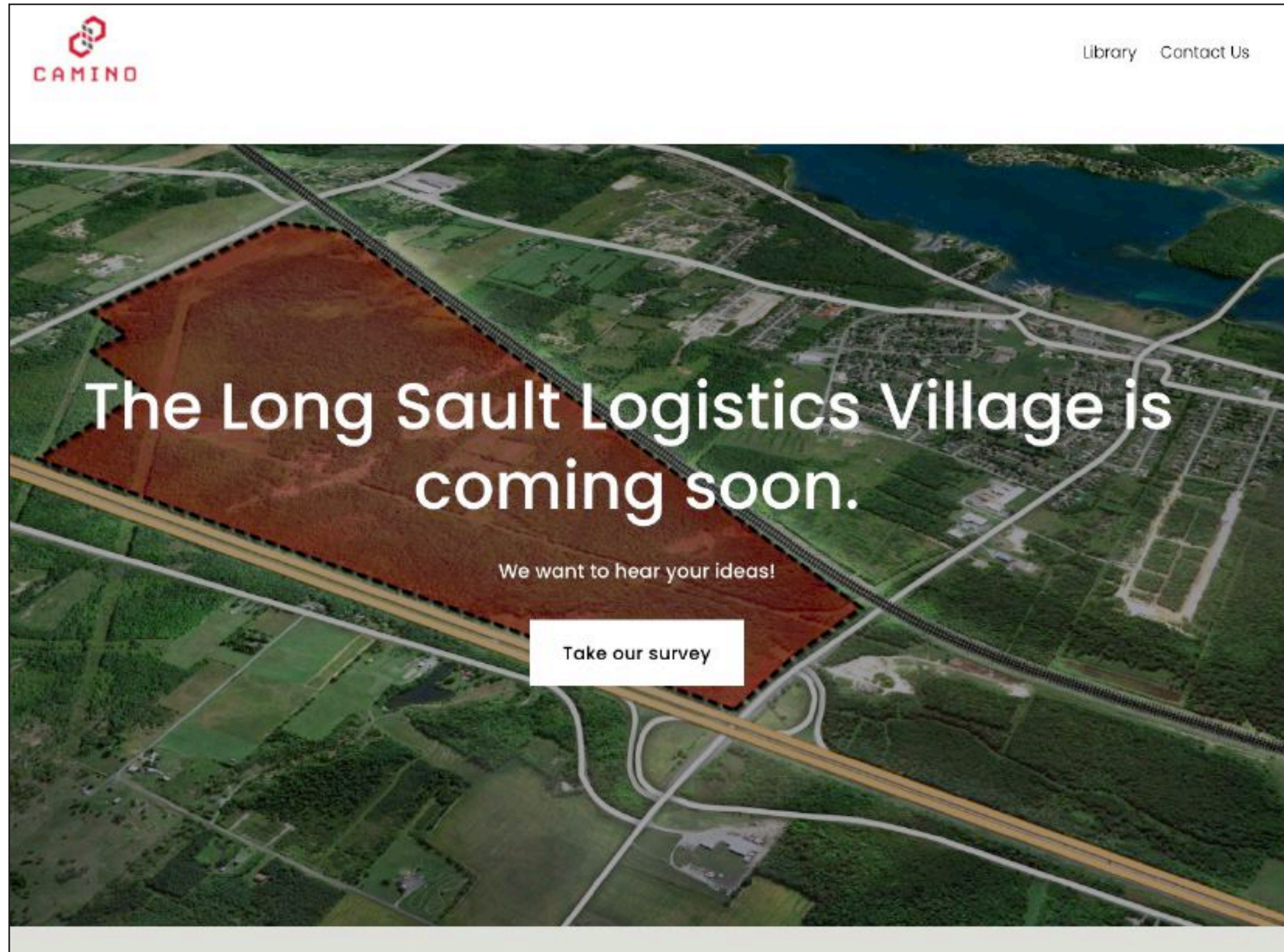
COUNTY ROAD 36

TO ST. LAWRENCE SEAWAY

LONG SAULT



# Community Engagement



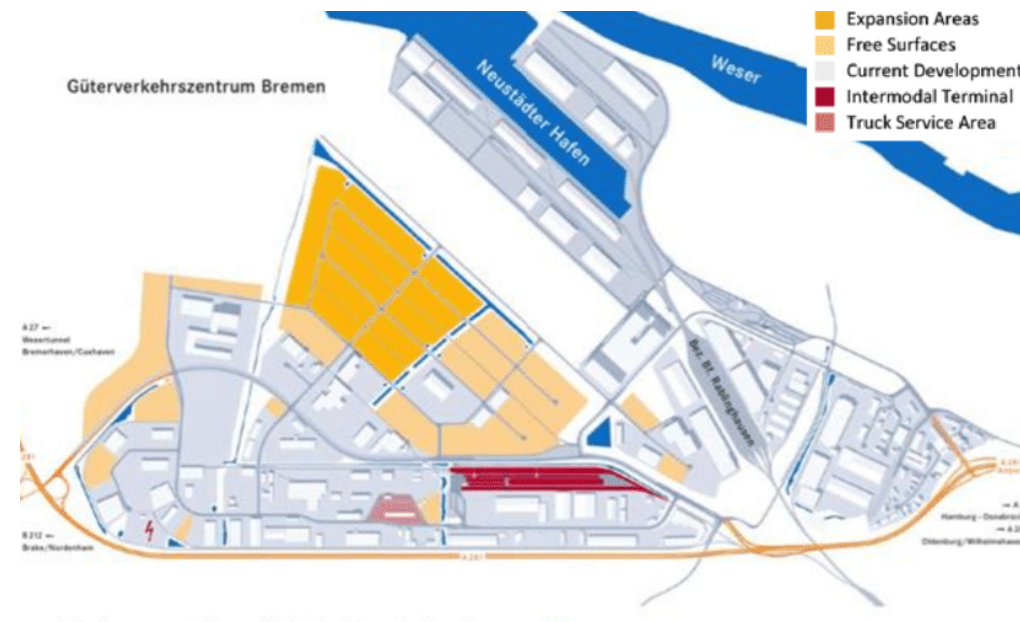
[www.caminolvs.com](http://www.caminolvs.com)

## Case Study | Key Take Away



### Interportal Bologna SPA

- Elevated Landscape
  - Tree lines along Streets / Roads
  - Central Open Space
  - Round -abouts
- Green Technology
- Use of permeable parking areas
- Mixed land uses



### GVZ Bermen

- Walkability
- Pedestrian Pathways
- Special Pathway Pavement
- More Natural Features



### Raritan Center

- Well Defined Gateway
  - Entrance Feature
  - Boulevarde Streets with Island
  - Well maintained Landscape
- Community Park

**Case Study** | Interportal Bologna SPA, Palazzina Doganale, Interporto, 40010 Bentivoglio BO, Italy



**Case Study** | GVZ Bermen, Ludwig-Erhard-Straße 15, 28197 Bremen, Germany





## Long Sault

Long Sault was a rapid in the St. Lawrence River upstream and west of Cornwall, Ontario. Sault is the archaic spelling of the French word saut, meaning rapids.

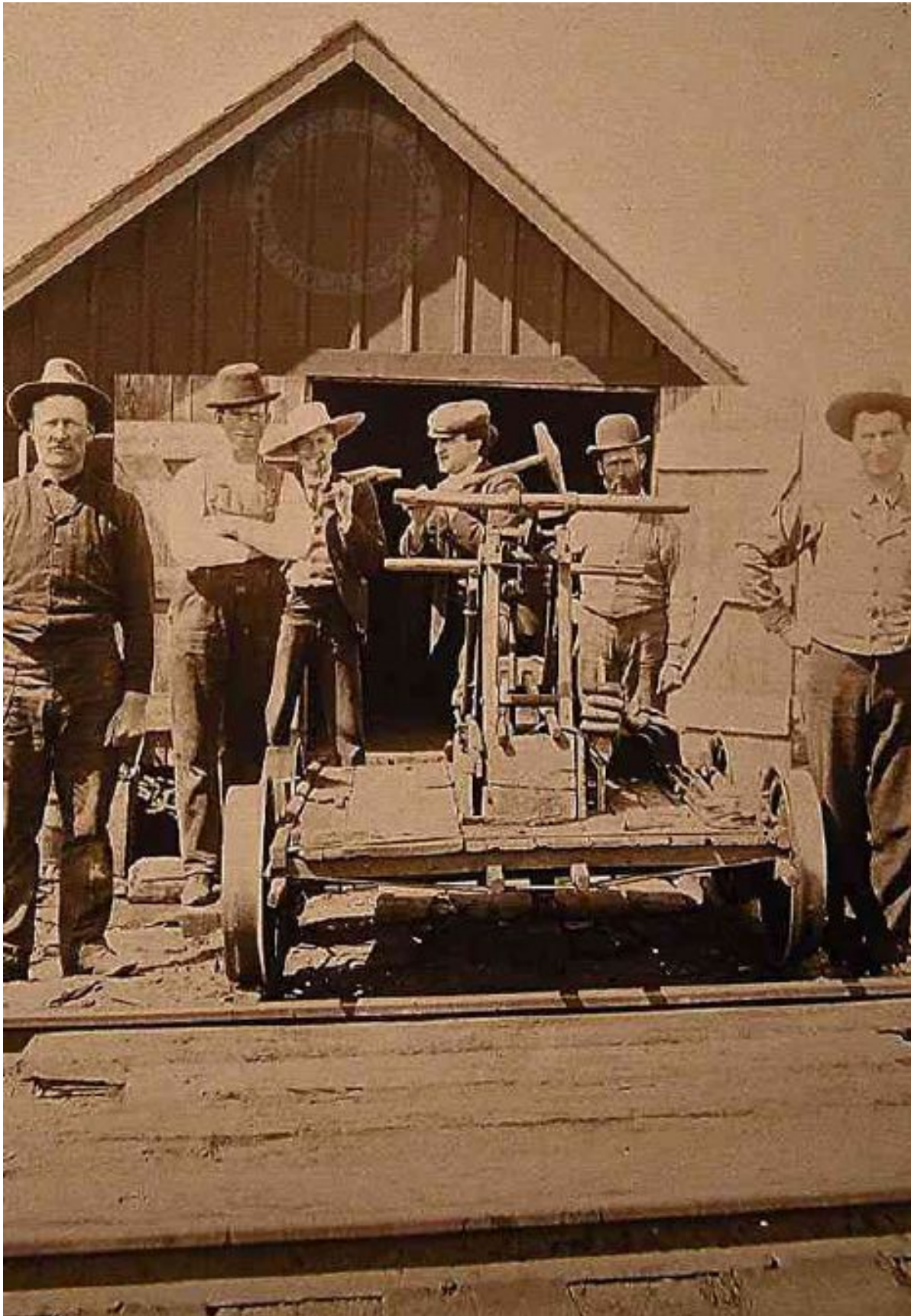
The Long Sault created a navigation barrier along the river for much of its history, motivating the construction of the Moses-Saunders Power Dam, part of the St. Lawrence Seaway, in the 1950s as the size of ships and the volume of shipping traffic along the river began to exceed the capacity of the area's canal locks.

The construction required the flooding of a large swath of land near the rapids to facilitate a hydroelectric dam and to make the rapids area more navigable. The flooded region includes Ontario's Lost Villages.

The Long Sault Parkway takes its name from the rapids.



# Long Sault



# Long Sault

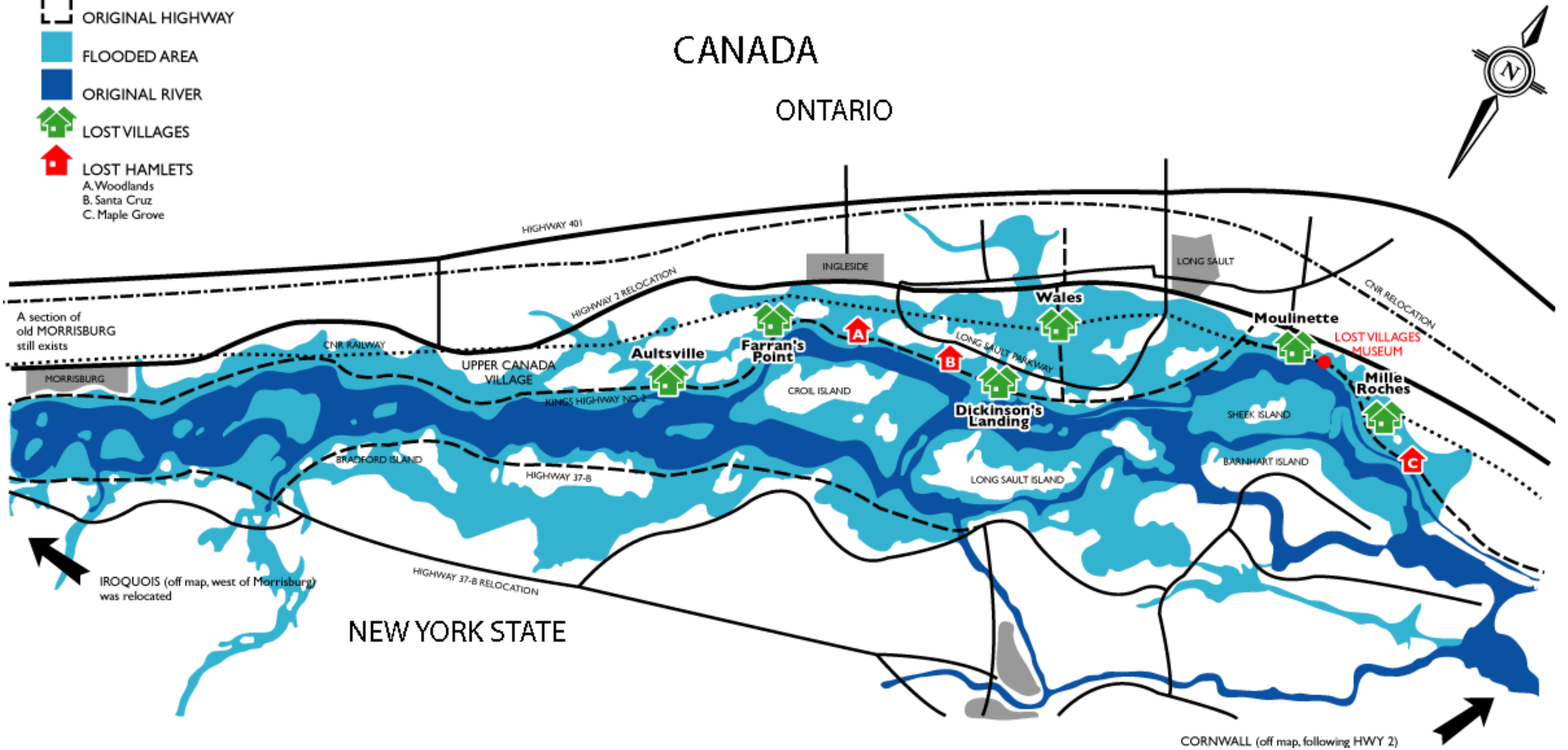


THIS IS THE LONG SAULT RAPIDS AREA AFTER IT WAS DRIED UP. NOTE THE TOWER IN BACKGROUND THIS WAS PART OF THE COPPER DAM USED TO DRY UP THE WATER.



# Long Sault

-  CNR RAILWAY
-  ORIGINAL CNR RAILWAY
-  HIGHWAY
-  ORIGINAL HIGHWAY
-  FLOODED AREA
-  ORIGINAL RIVER
-  LOST VILLAGES
-  LOST HAMLETS
  - A. Woodlands
  - B. Santa Cruz
  - C. Maple Grove



# Site Context



Hwy 401

Hwy 401

Employment Site - 676 Acres

Existing CN Railway Tracks

Long Sault

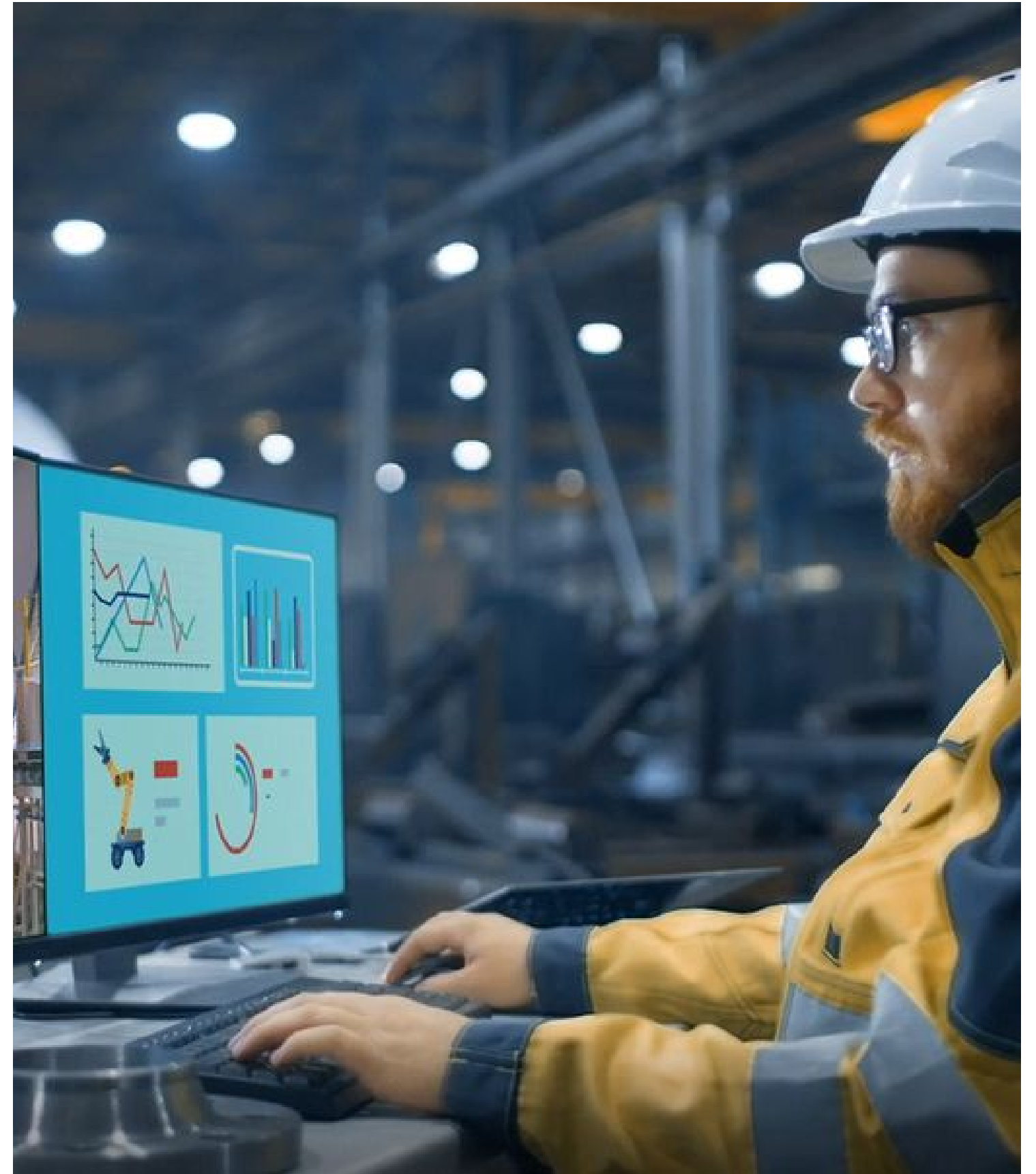
Cornwall

Ingleside

Long Sault Pkwy

St. Lawrence River

# The Vision | Quality of Life



# The Vision | Sense of Long Sault



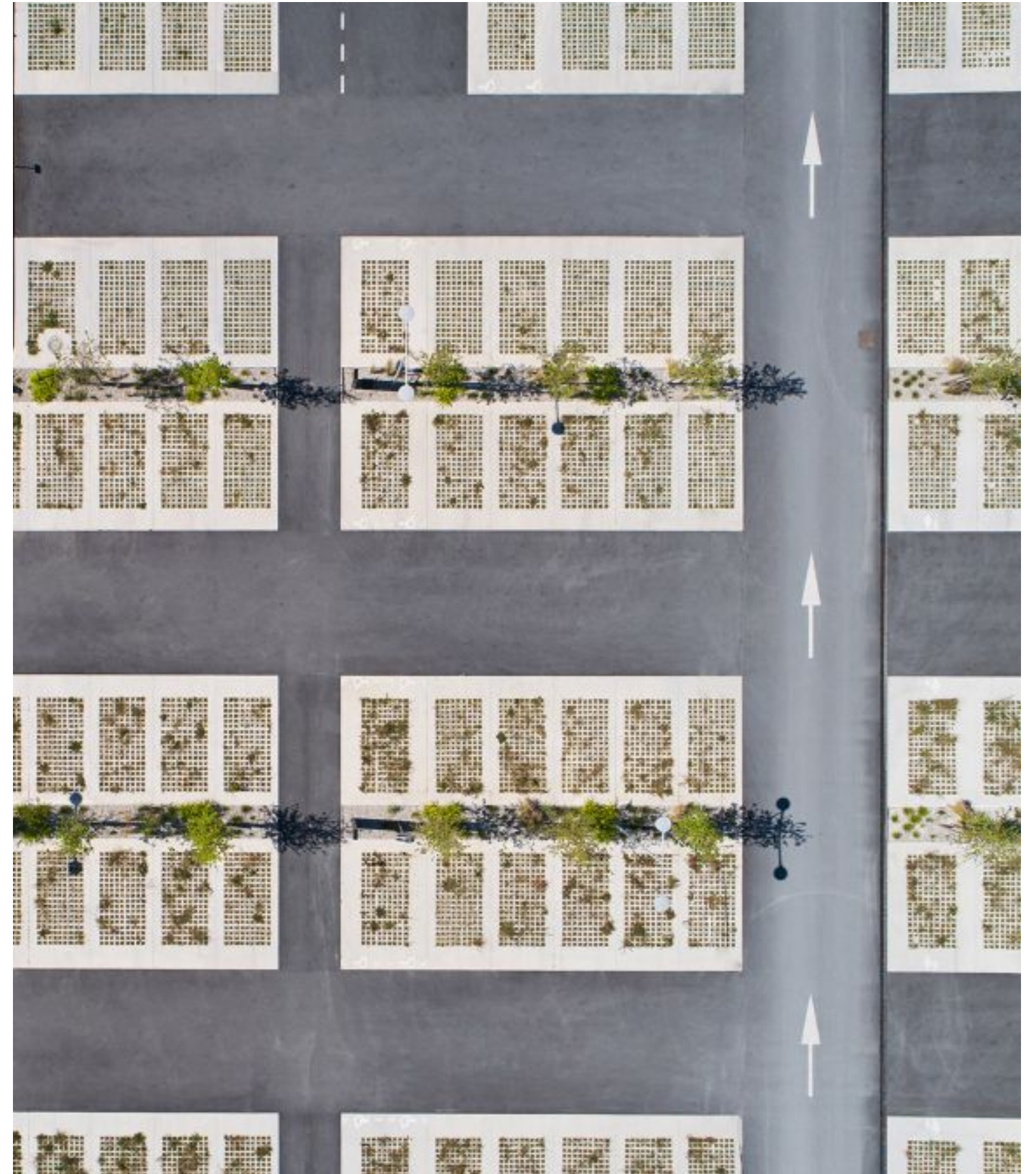
# The Vision | Innovation and Rail



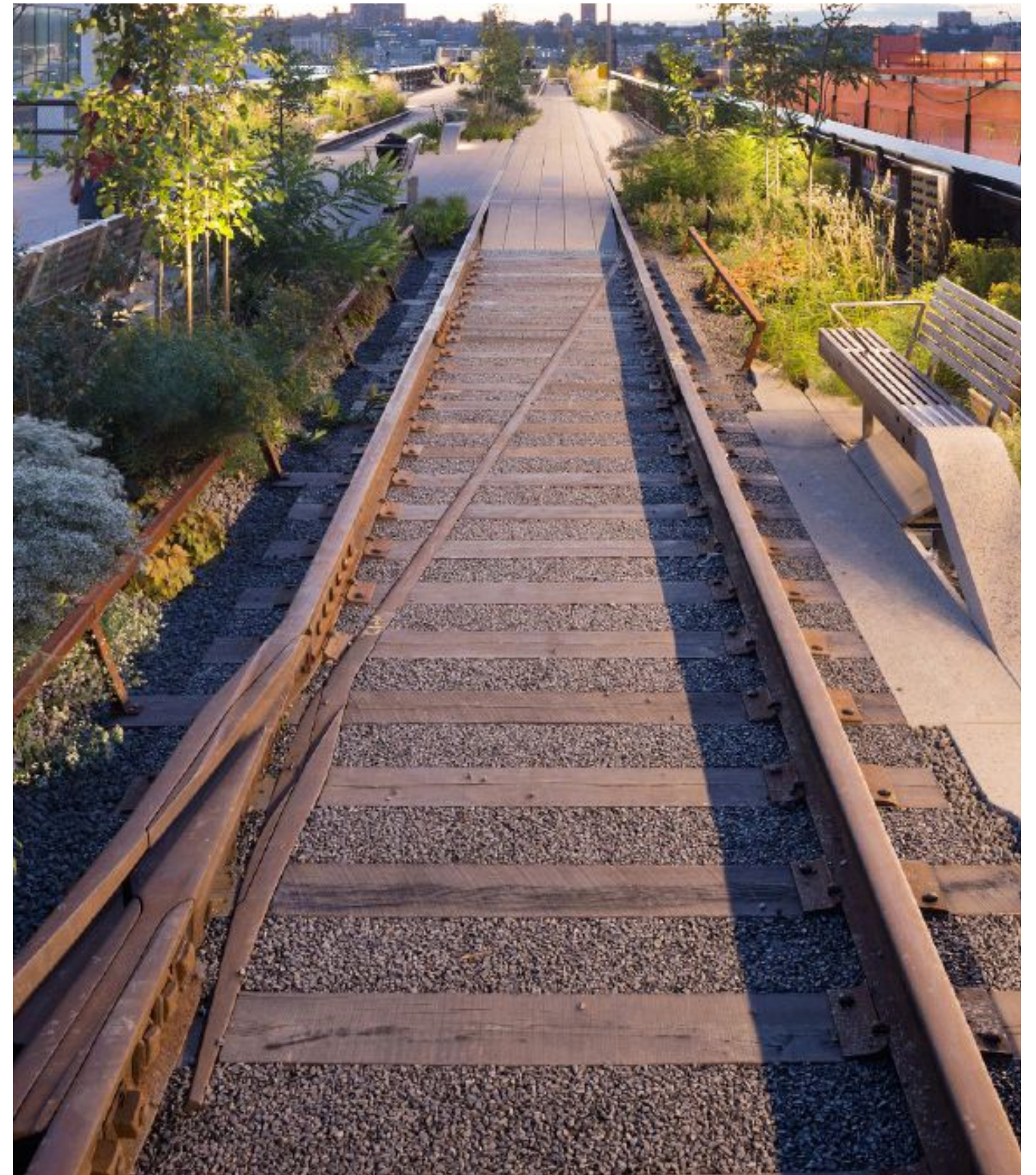
# The Vision | Character and Place



# The Vision | Prioritizing Sustainability



# The Vision | Integration and Identity

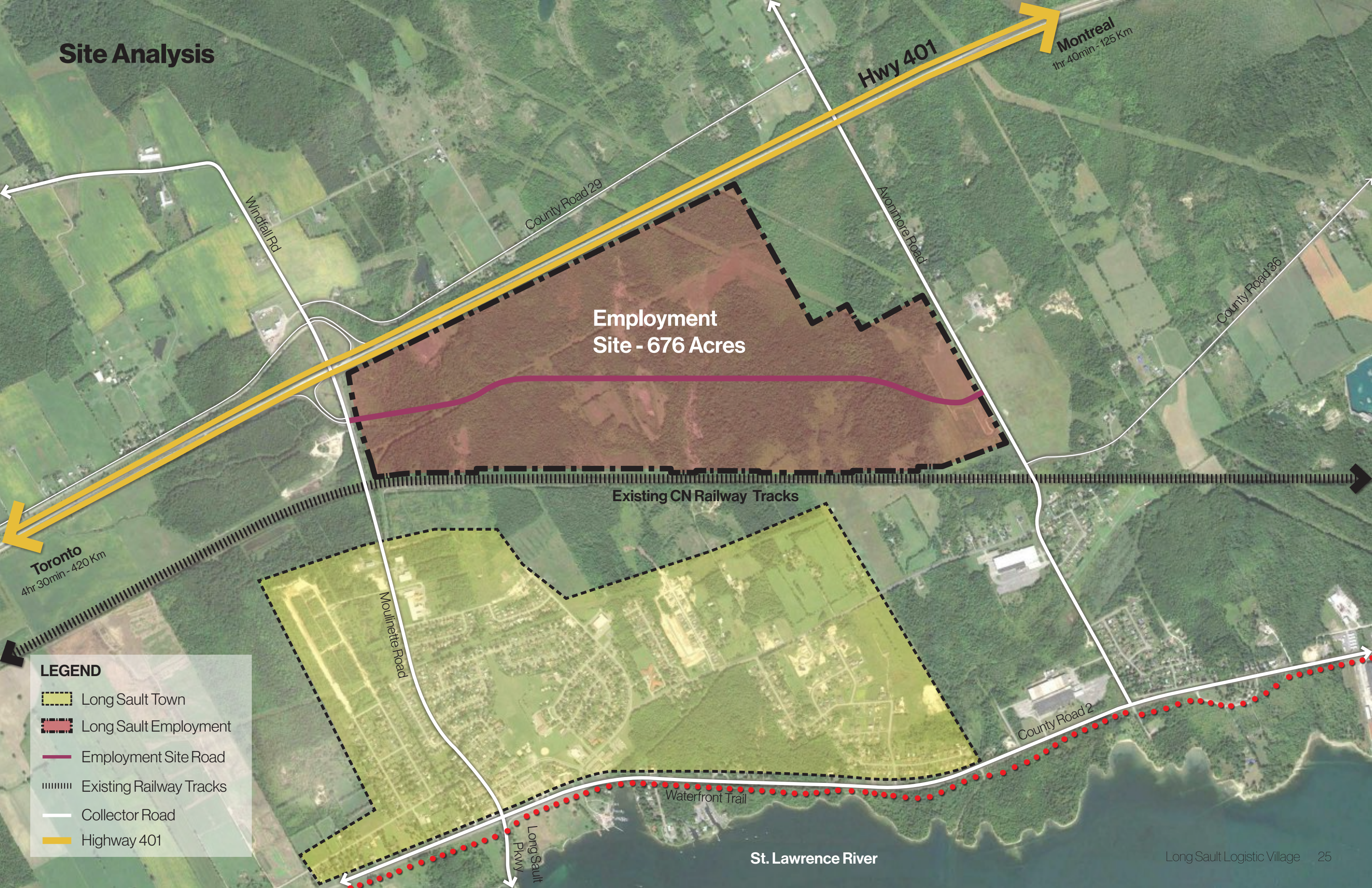




# The Vision | Integration and Identity



# Site Analysis



Employment Site - 676 Acres

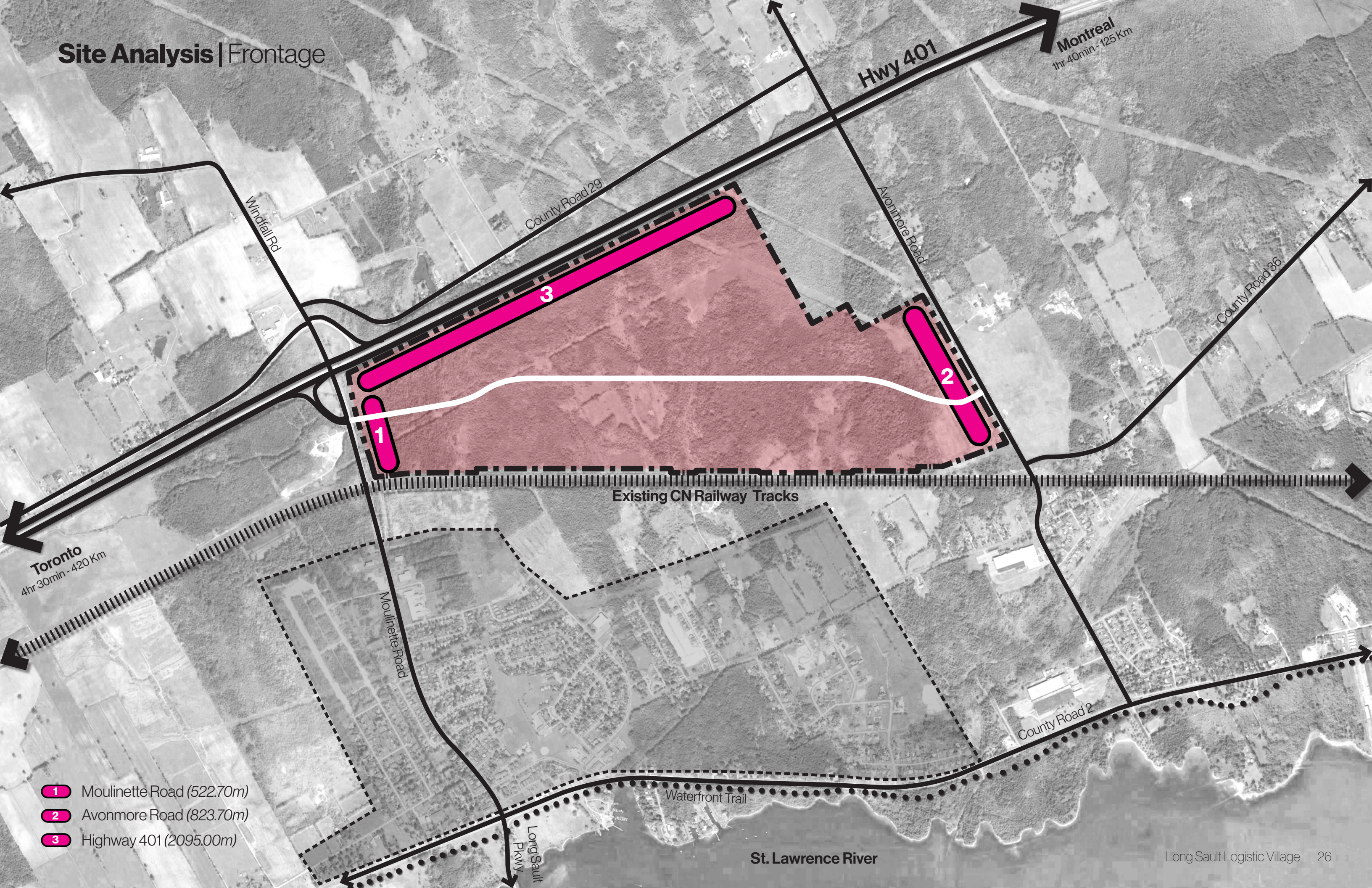
Existing CN Railway Tracks

**LEGEND**

- Long Sault Town
- Long Sault Employment
- Employment Site Road
- Existing Railway Tracks
- Collector Road
- Highway 401

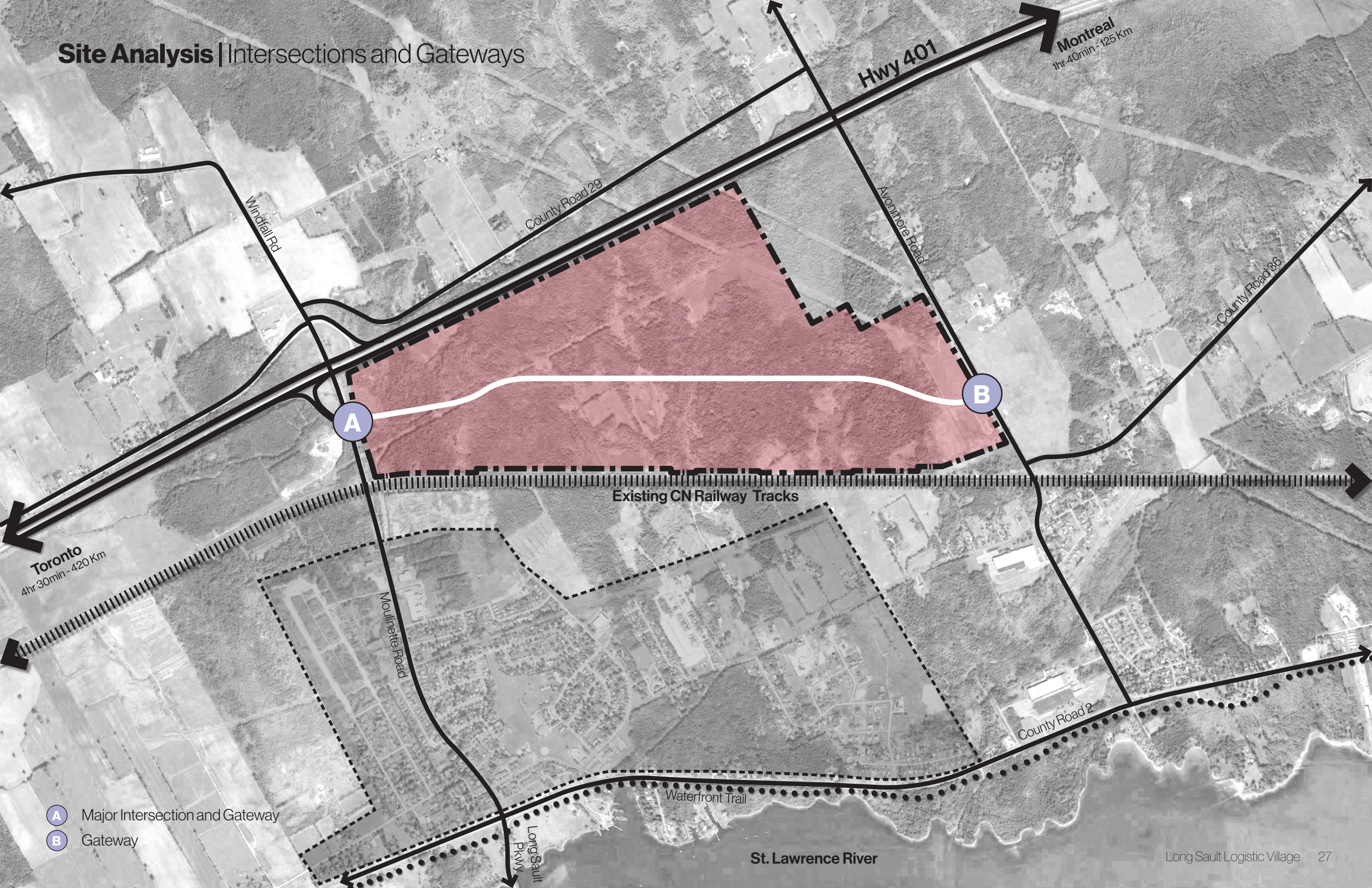
St. Lawrence River

# Site Analysis | Frontage



- 1 Moulinette Road (522.70m)
- 2 Avonmore Road (823.70m)
- 3 Highway 401 (2095.00m)

# Site Analysis | Intersections and Gateways

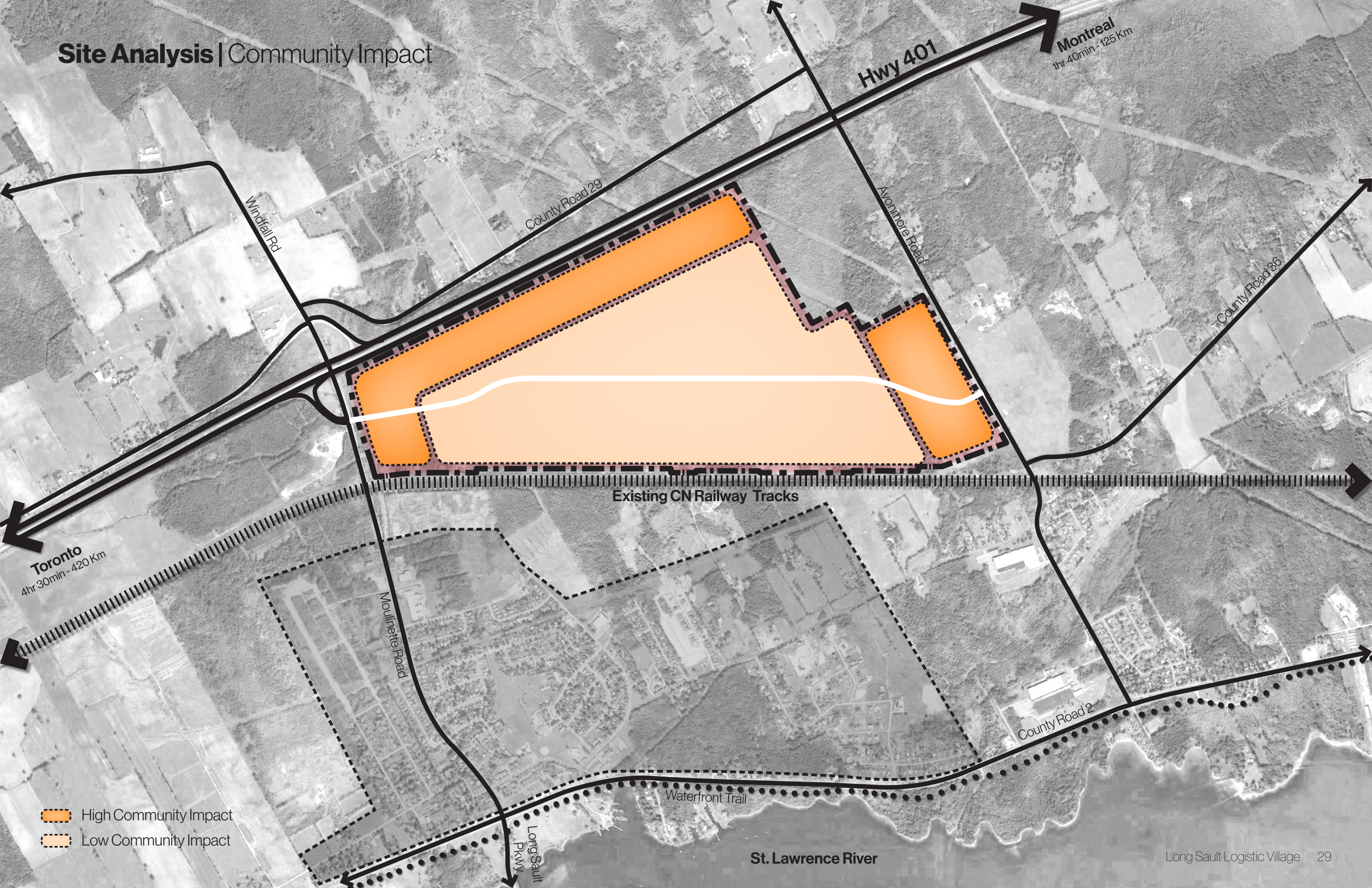


- A** Major Intersection and Gateway
- B** Gateway

# Site Analysis | Site Visibility

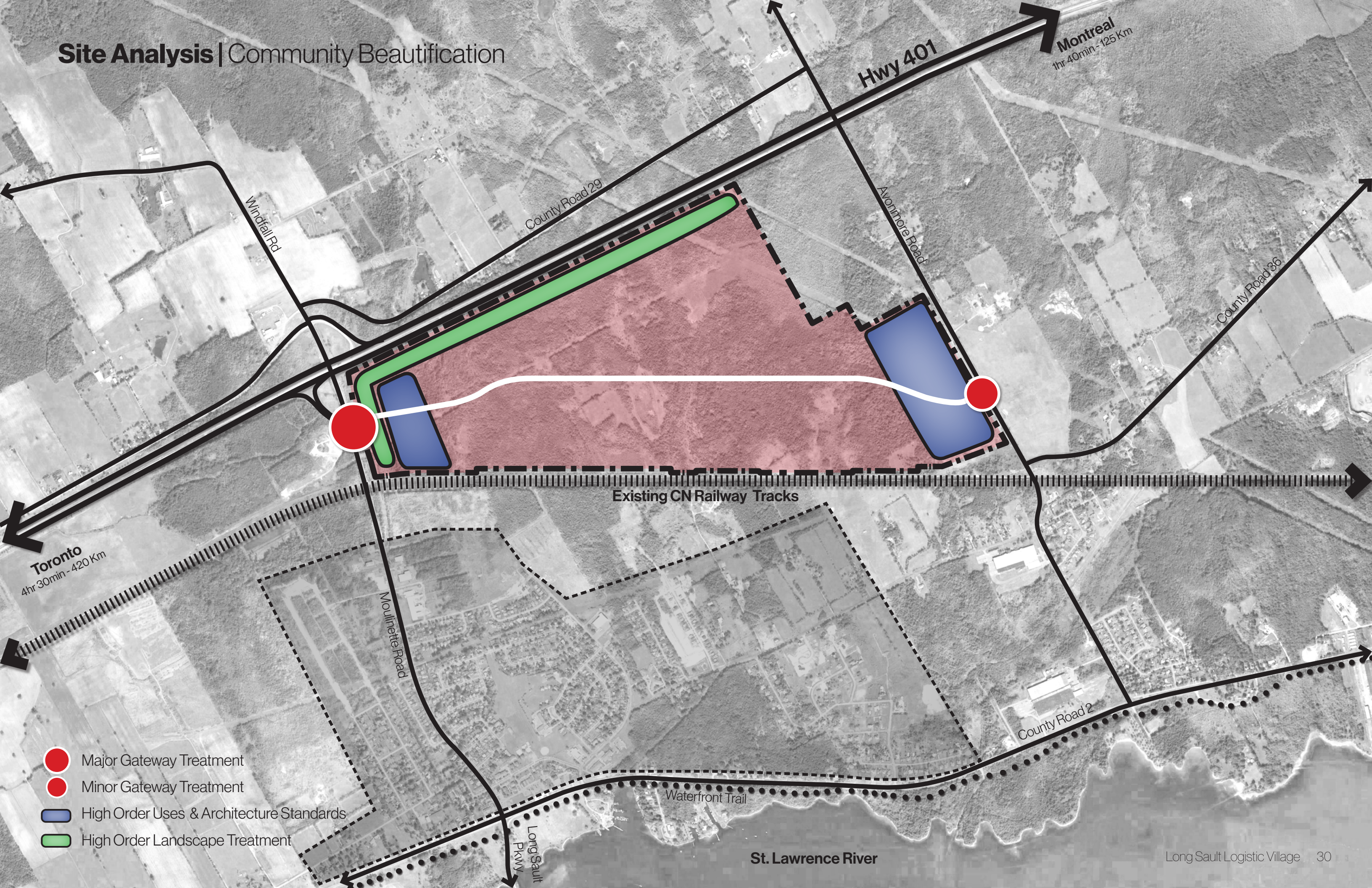


# Site Analysis | Community Impact



- High Community Impact
- Low Community Impact

# Site Analysis | Community Beautification



Toronto  
4hr 30min - 420 Km

Montreal  
1hr 40min - 125 Km

Hwy 401

Windfall Rd

County Road 29

Avonmore Road

County Road 36

Existing CN Railway Tracks

Moulinette Road

County Road 2

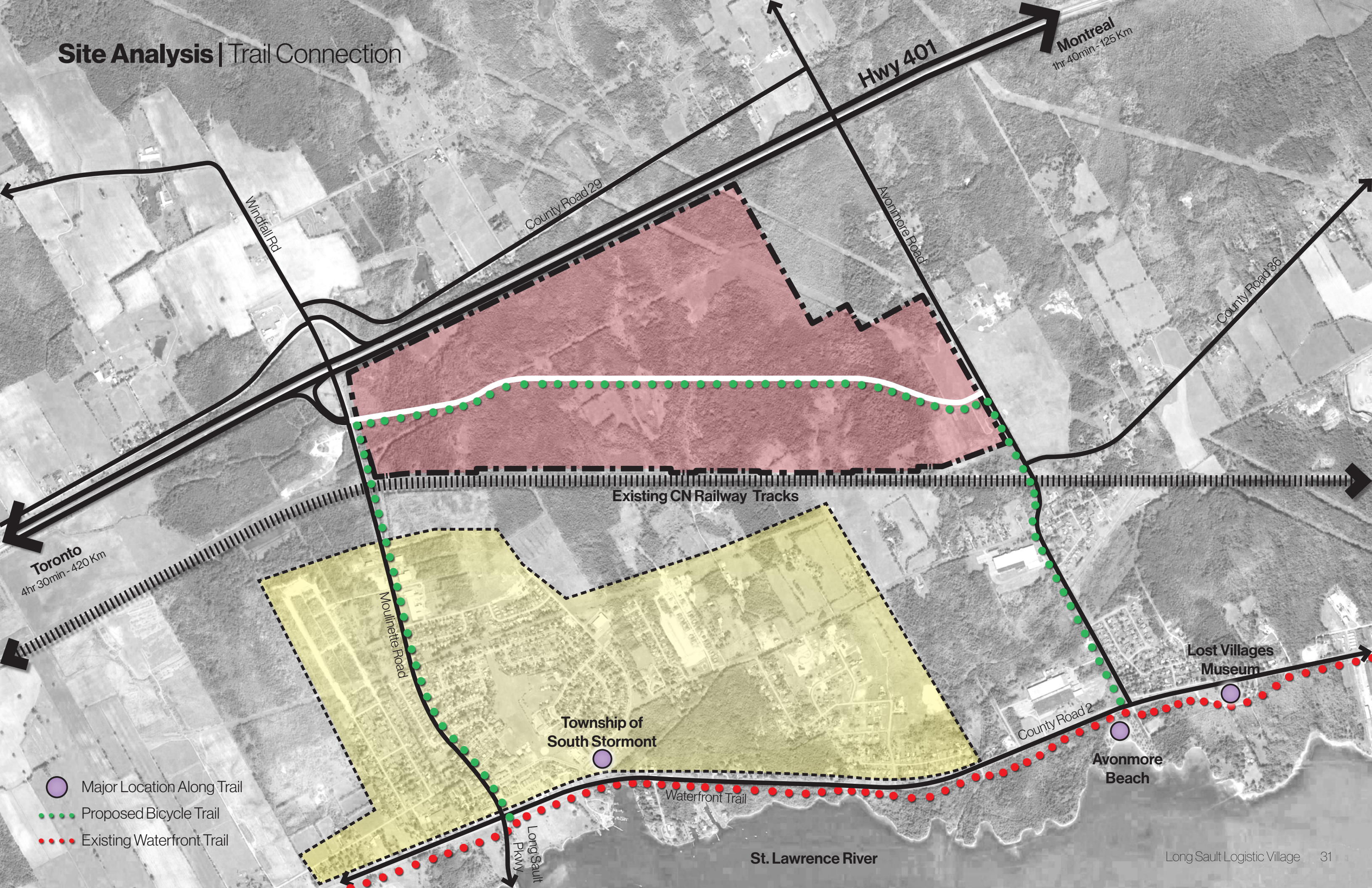
Long Sault Pkwy

Waterfront Trail

St. Lawrence River

- Major Gateway Treatment
- Minor Gateway Treatment
- High Order Uses & Architecture Standards
- High Order Landscape Treatment

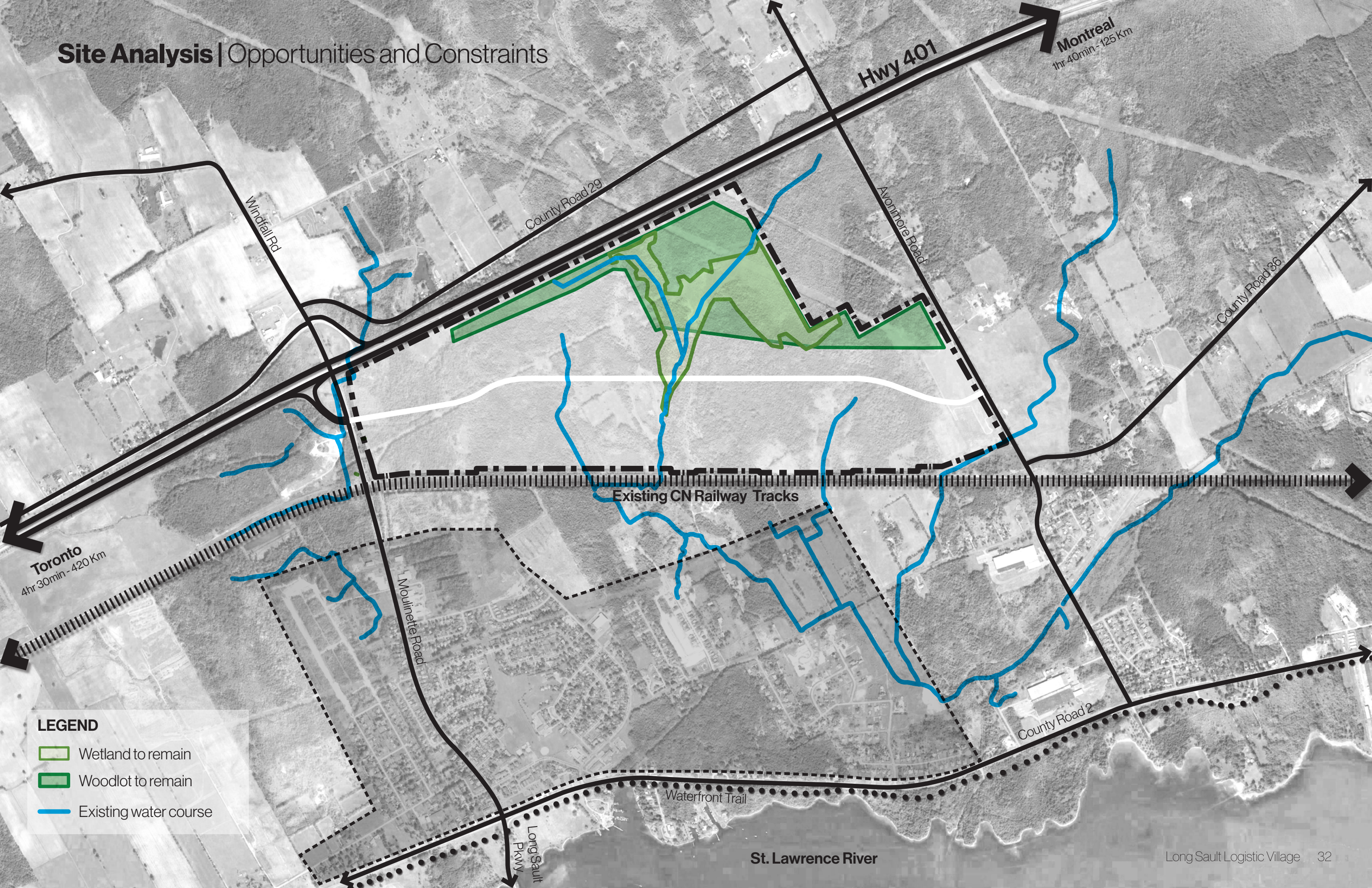
# Site Analysis | Trail Connection



- Major Location Along Trail
- Proposed Bicycle Trail
- Existing Waterfront Trail



# Site Analysis | Opportunities and Constraints



Toronto  
4hr 30min - 420 Km

Montreal  
1hr 40min - 125 Km

Hwy 401

Windfall Rd

County Road 29

Avonmore Road

County Road 36

Existing CN Railway Tracks

Moulinette Road

County Road 2

Waterfront Trail

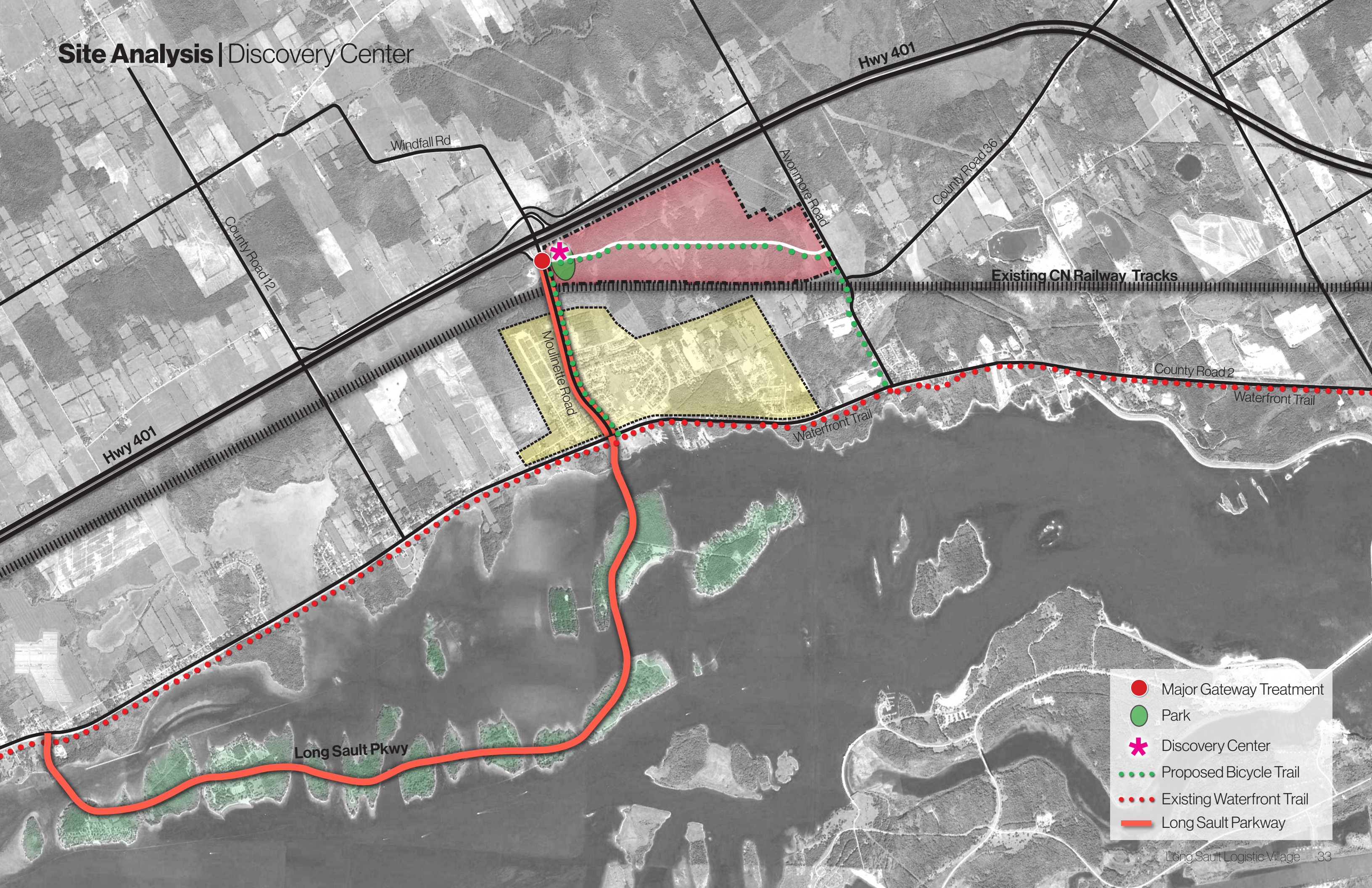
St. Lawrence River

Long Sault Pkwy

**LEGEND**

- Wetland to remain
- Woodlot to remain
- Existing water course

# Site Analysis | Discovery Center



- Major Gateway Treatment
- Park
- ✱ Discovery Center
- Proposed Bicycle Trail
- Existing Waterfront Trail
- Long Sault Parkway

# Concept Plan - For Discussion



***Community centered progress***

***technological***

***industrial***

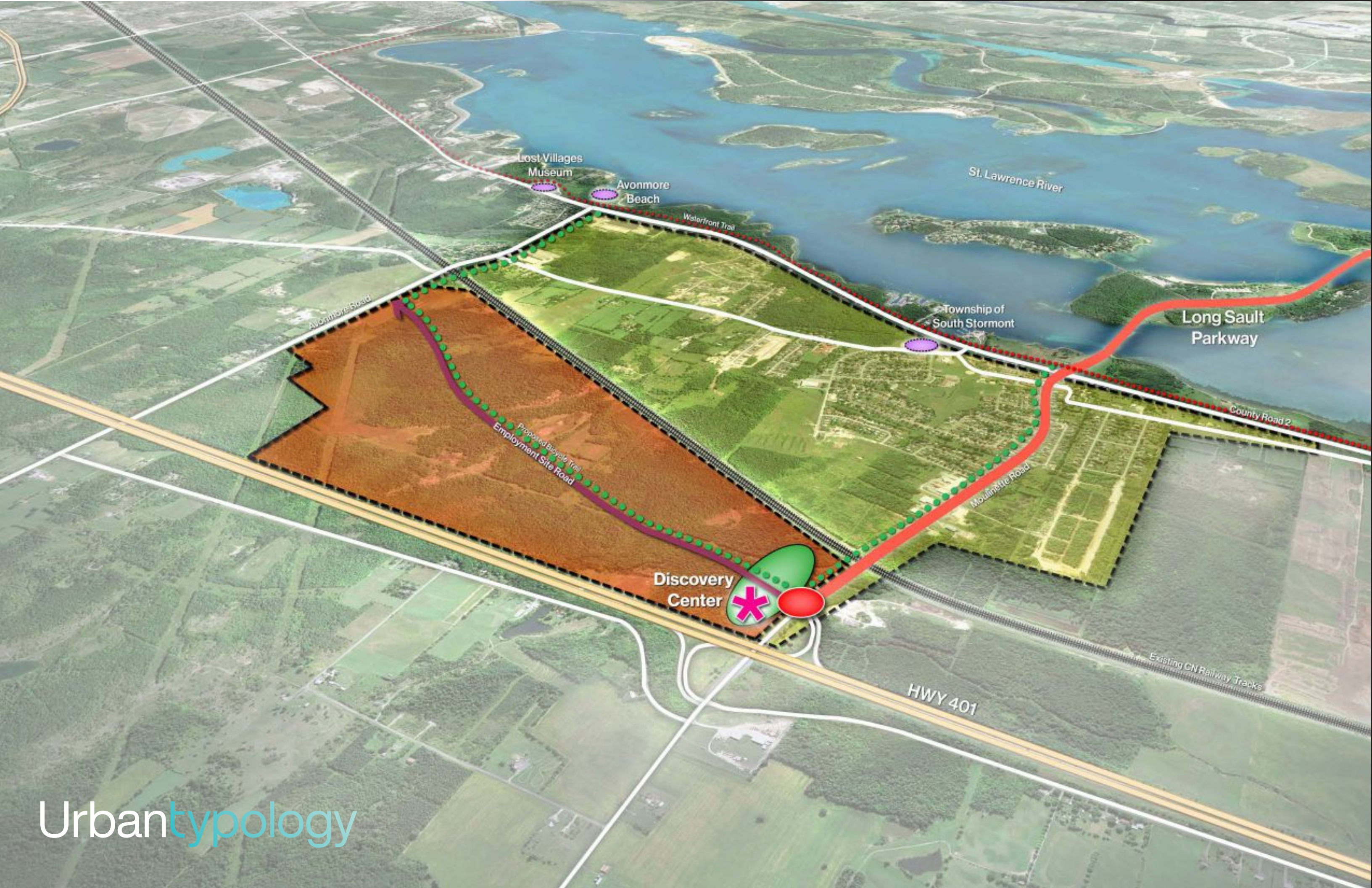
***economic***

***sustainable***

***cultural***

***innovative***

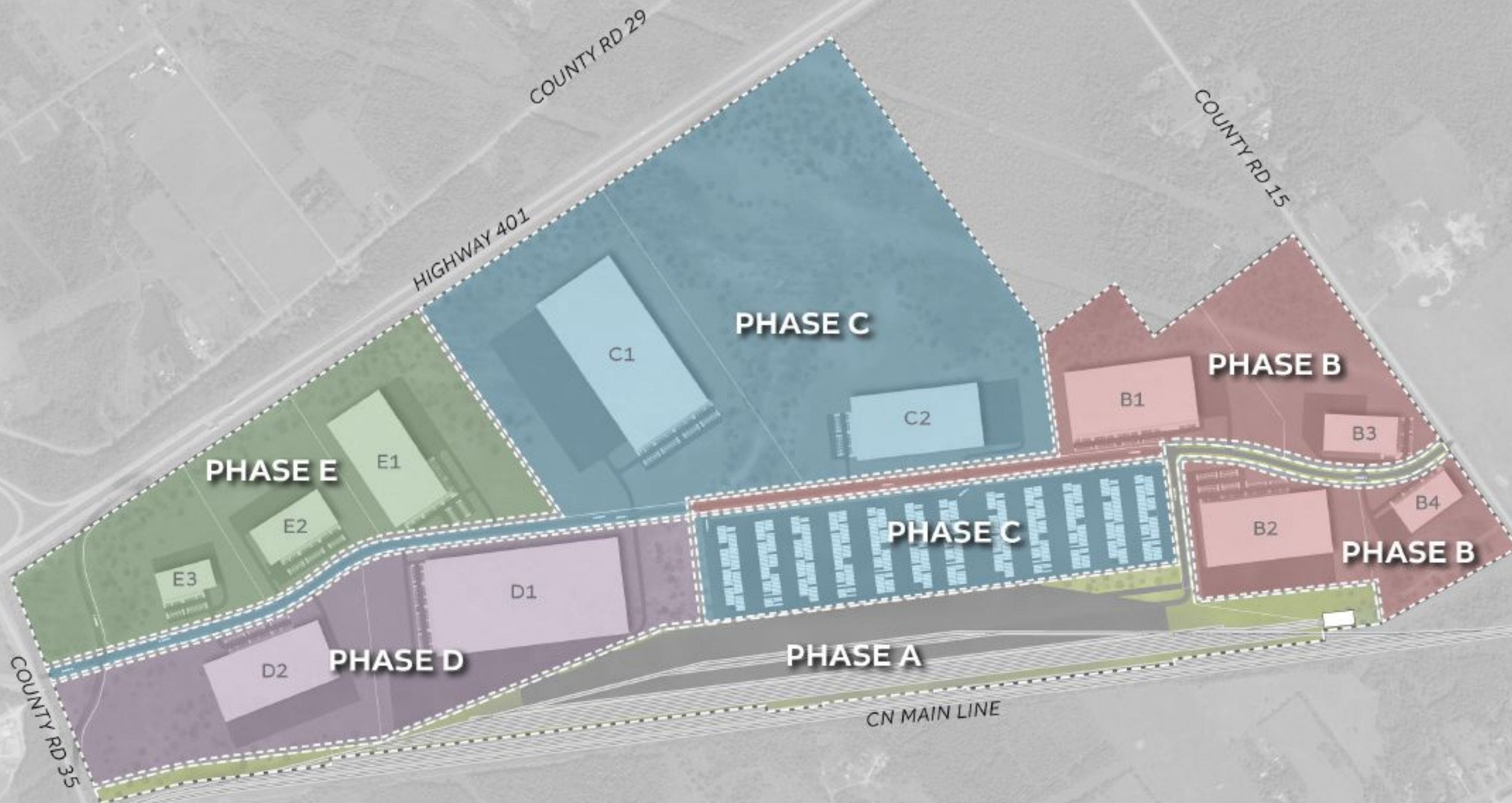
***local + national***



# Project Roadmap



# Project Roadmap



**For more information visit:** [www.caminoivs.com](http://www.caminoivs.com)

